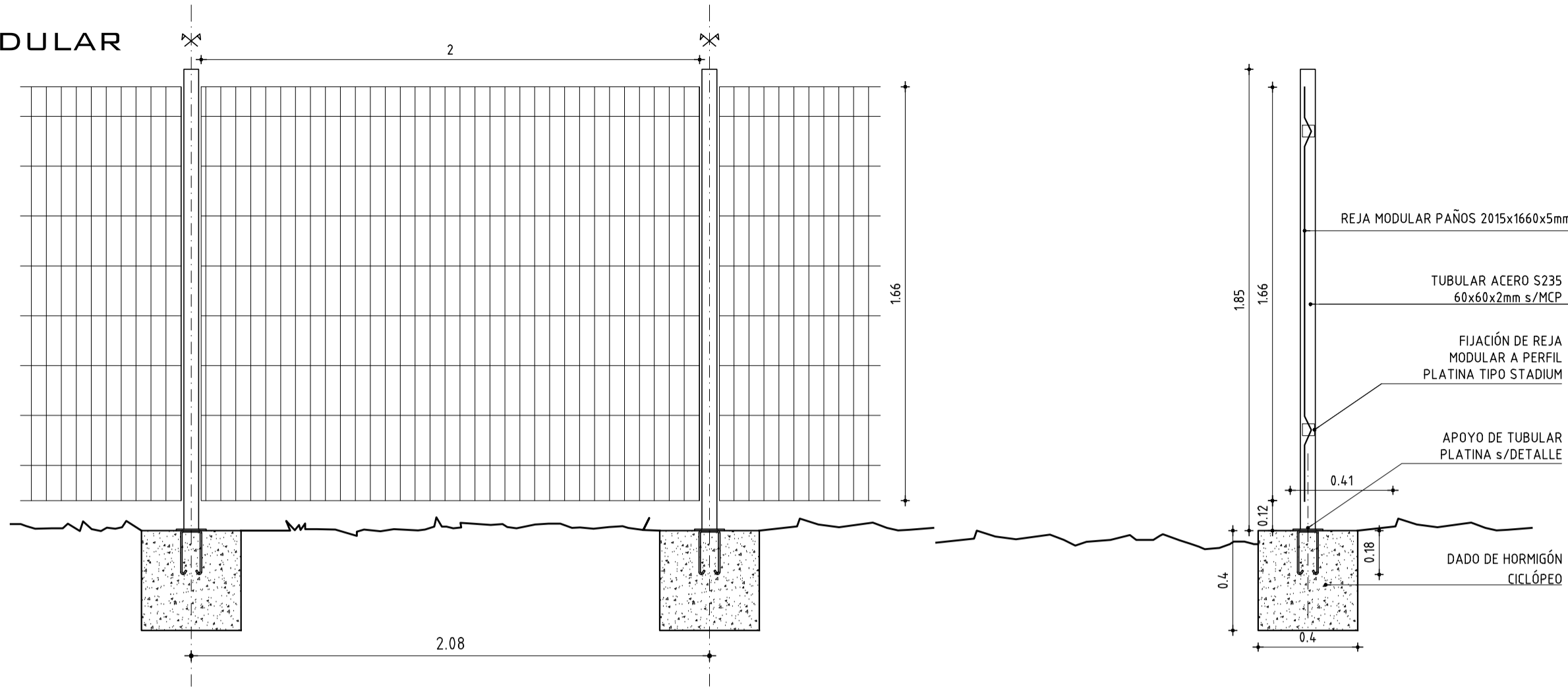


CERCO EXTERIOR 1
TUBULARES Y REJA MODULAR
ESCALA 1/20



PLATINA UNION
TUBULAR A DADO
ESCALA 1/10

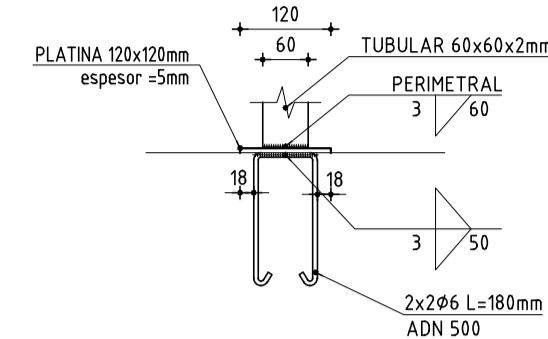
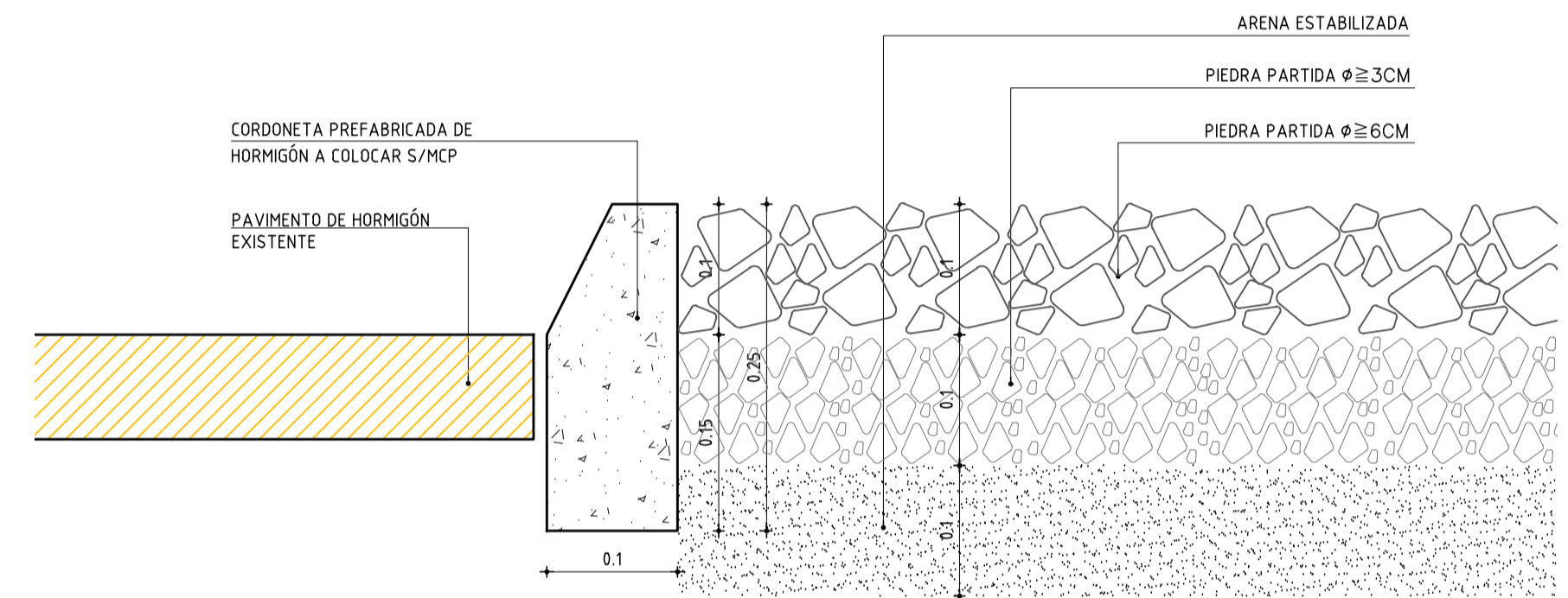
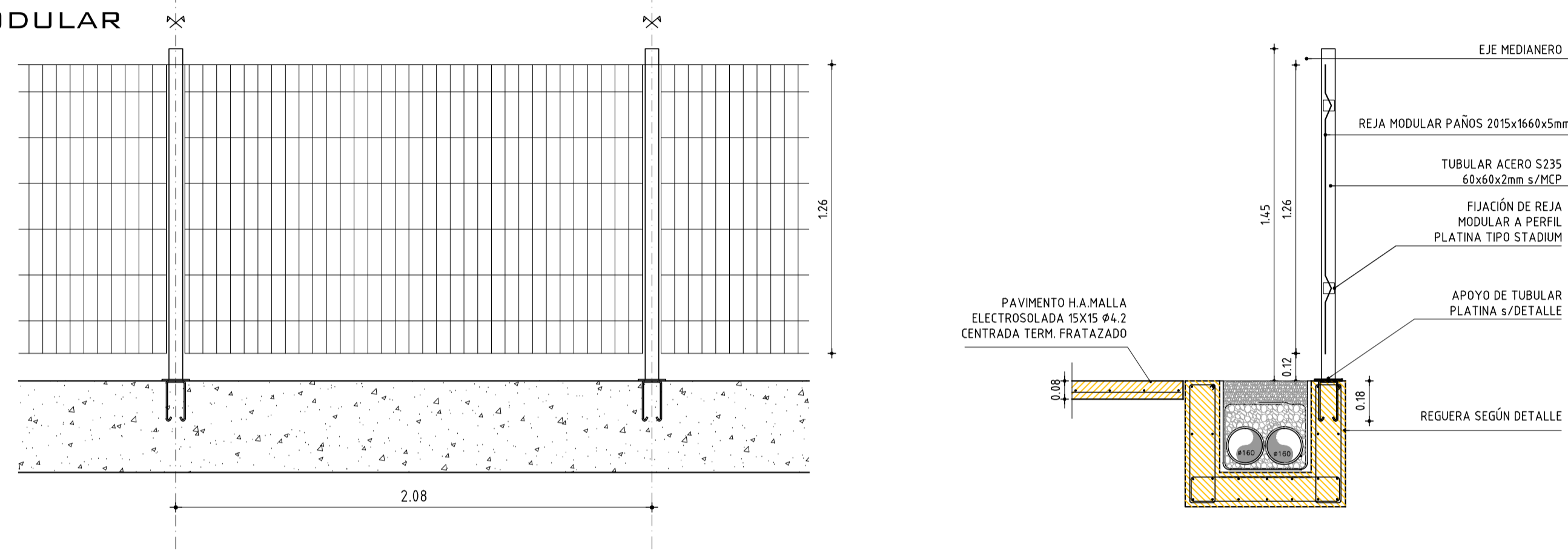


IMAGEN ILUSTRATIVA
REJA MODULAR
ESCALA S/E

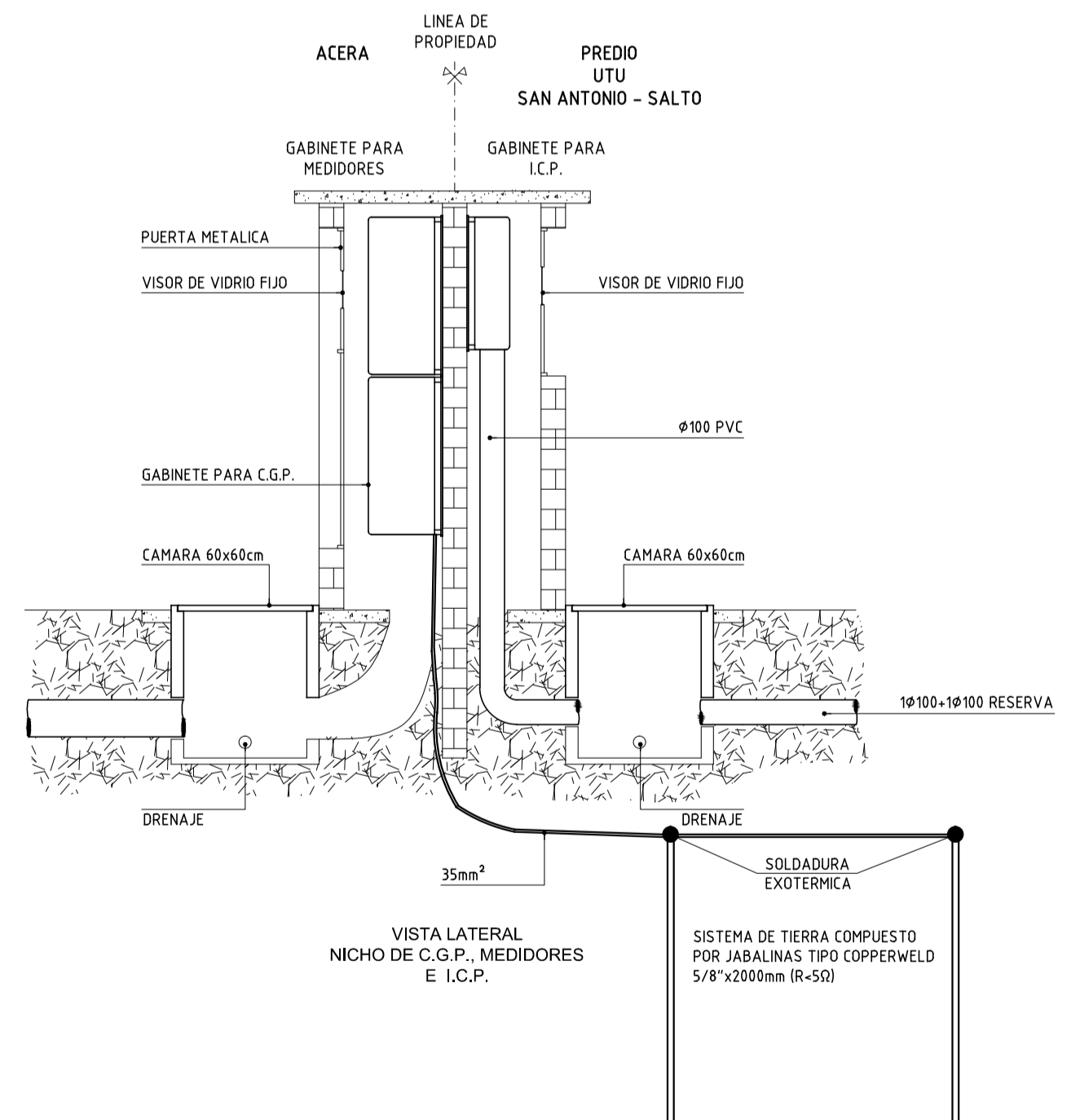
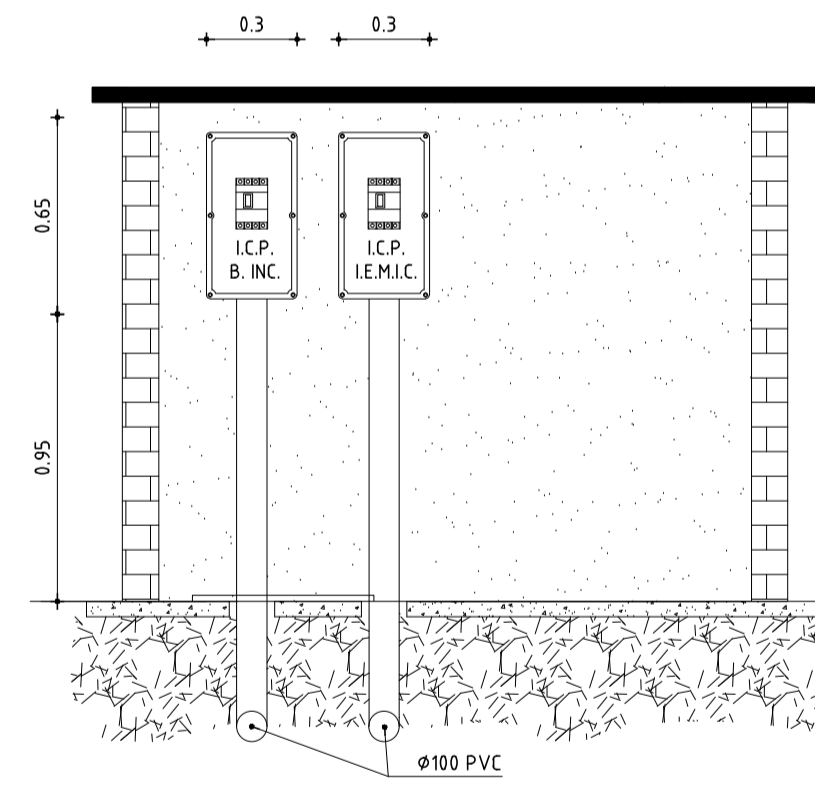
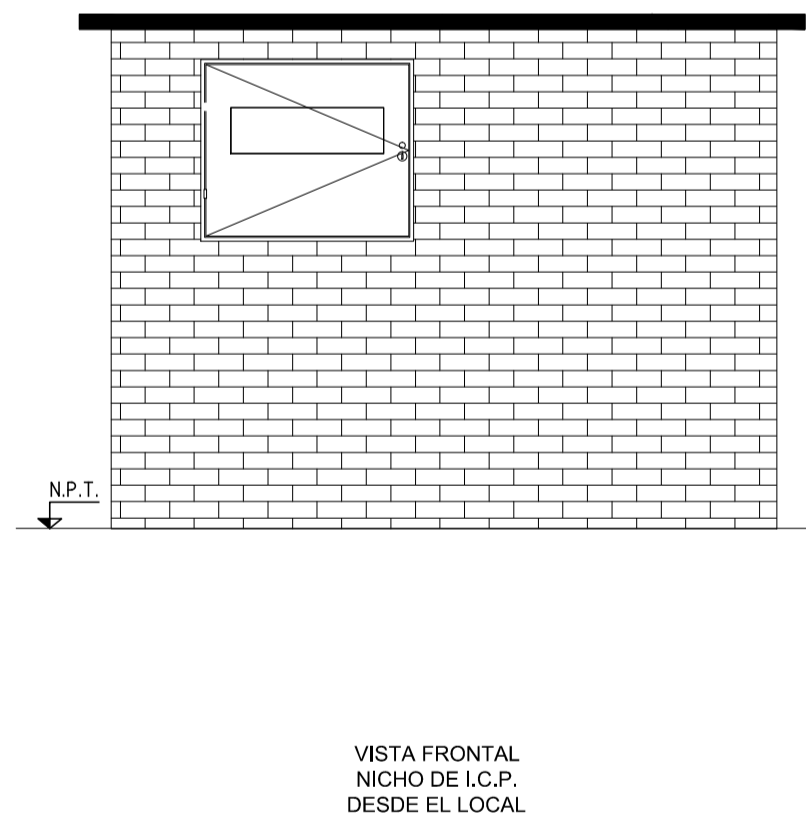
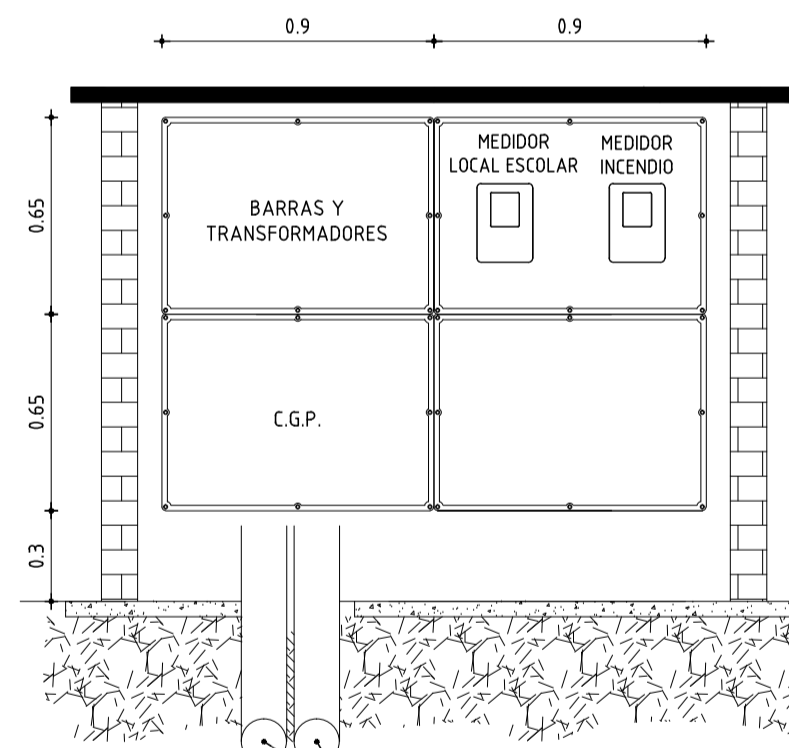
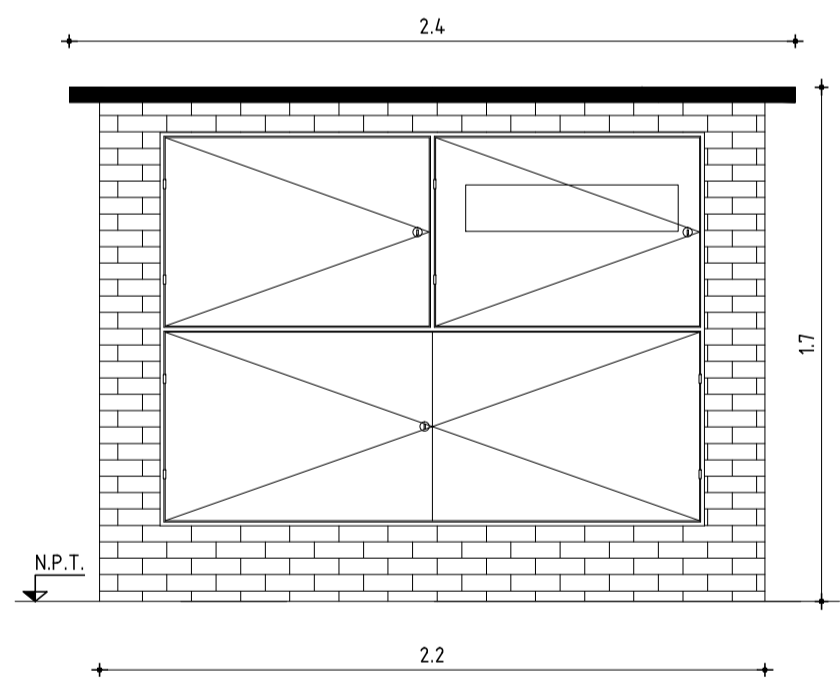


CERCO EXTERIOR 2
TUBULARES Y REJA MODULAR
ESCALA 1/20

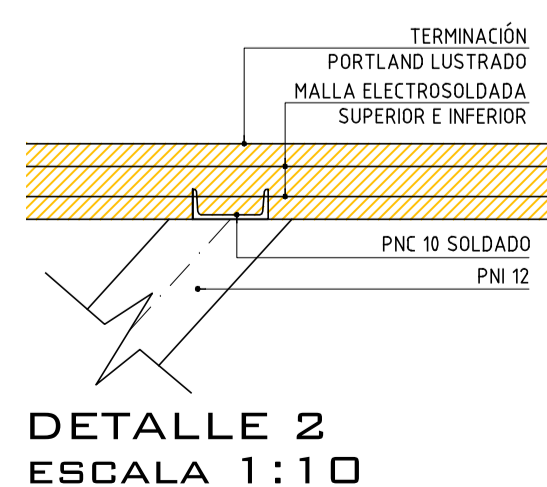
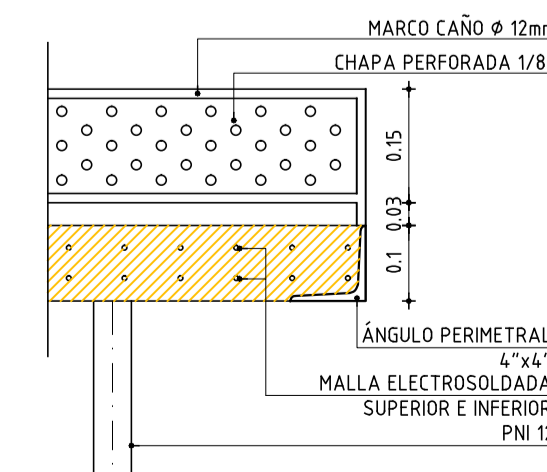
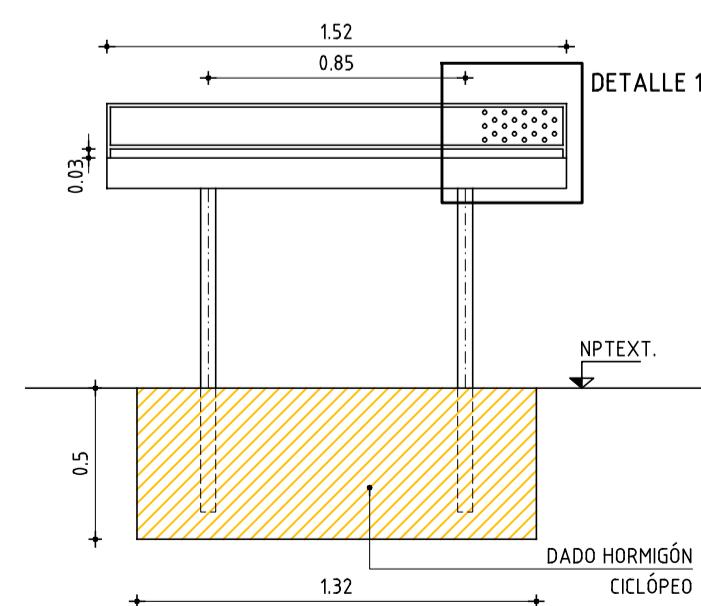
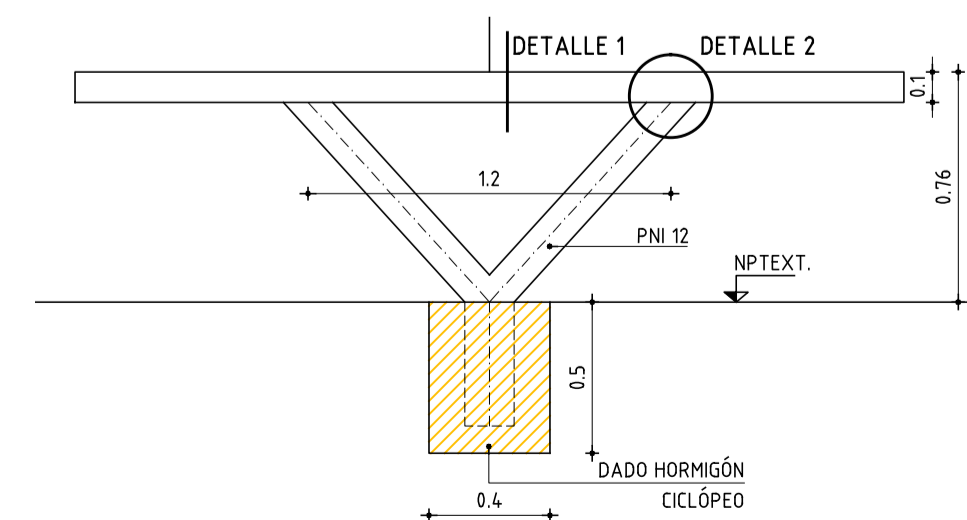
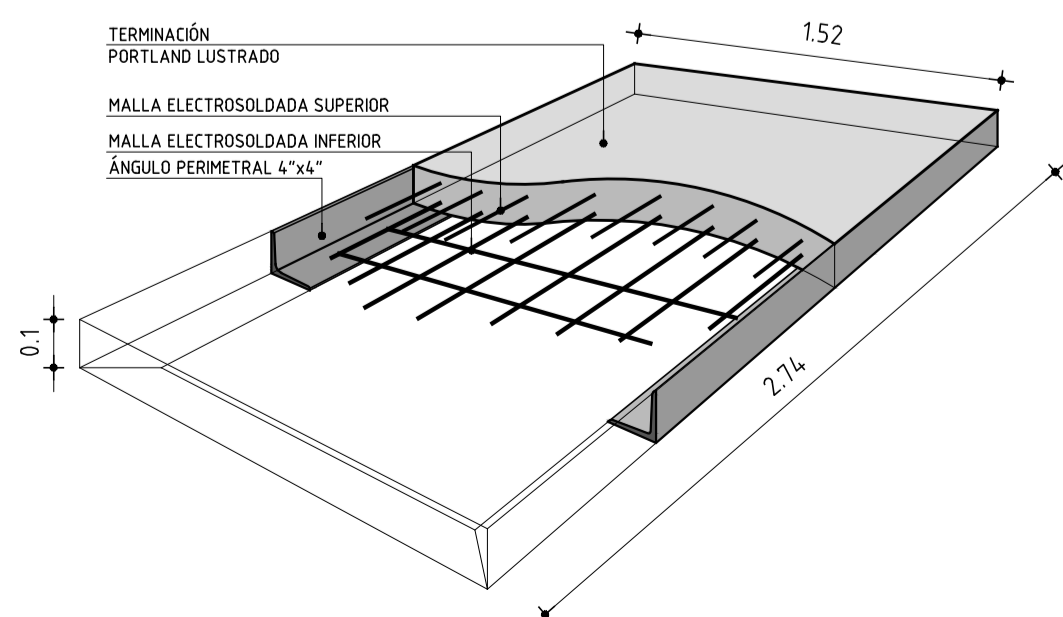


DETALLE DE CORDONETA
Y PAVIMENTO TIPO DRENAJE
ESCALA 1:5

NICHO DE C.G.P., MEDIDORES E I.C.P.
ESC.: 1/25



MESA EXTERIOR TENIS DE MESA



ANEP AREA DE PROYECTOS DIRECCIÓN SECTORIAL DE INFRAESTRUCTURA CONSEJO DIRECTIVO CENTRAL	
OBRA: COMPLEJO EDUCATIVO SAN ANTONIO	LOCALIDAD: SAN ANTONIO
CALLE: Calle N°18 entre calle N°24 y Vía férrea	DEPARTAMENTO: SALTO
FECHA: 1/1/2020	ESCALA: 1/25-1/10-1/5
PLANO DE: ALBANILERÍA	LÁMINA N°: L 25
SECTOR UTU - DETALLES CONSTRUCTIVOS- ESP. EXTERIORES	
ARQUITECTO: ERNESTO MARTÍNEZ PUIGZÓ	FIRMA:
AYTE. DE ARQUITO: HORACIO MUÑOZ - ROSSANA GONZÁLEZ	FIRMA:
TECNICO:	FIRMA:
DEBUJANTE:	FIRMA: